

Vol 3.

Bringing It All Together



KSGPC Submits Its Official Bid Book for ISPRS Congress 2030!

KSGPC has officially submitted its bid to host the ISPRS Congress 2030, marking a key milestone in its journey to bring the global geospatial community to Korea.

Led by the Korean Society of Surveying, Geodesy, Photogrammetry and Cartography (KSGPC), the bid reflects a strong foundation built across academia, government, and industry.

For those who may have missed our previous editions, this issue brings together key highlights—from Korea’s geospatial heritage and vision to an introduction to the host city, venue, and the organization leading the bid.

Guided by our theme, “Connecting the World through Spatial Insights,” we look ahead to shaping the future of geospatial science together.

Korea | Candidate for XXVI ISPRS Congress 2030

For centuries, Korea has looked up to the sky with curiosity and purpose.

In A.D. 647, during the Silla period, Korea built *Cheomseongdae*, one of the world’s oldest astronomical observatories – marking the beginning of a remarkable legacy in observation, measurement, and scientific inquiry. This spirit of exploration continues today, bridging Korea’s early study of the skies with its modern leadership in Earth observation and geospatial innovation

Today, that same spirit guides Korea’s bid to host the XXVI ISPRS Congress.

From ancient stargazing to modern geospatial advancements, we invite the global ISPRS community to join us in shaping the next chapter of discovery together.



A.D. 647
Cheomseongdae
Astronomical Observatory



A.D. 1395
Planisphere
Second Oldest Star Map



A.D. 1433
Honcheonui
Armillary Sphere

A.D. 2025
KOMPSAT-7



Where Tradition Meets Innovation

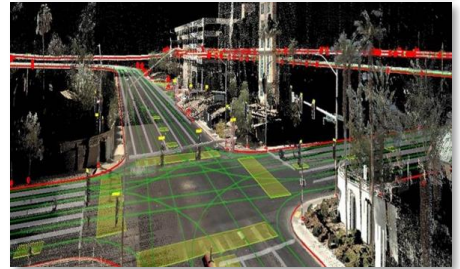
Welcome to Korea

Globally recognized for **K-pop, film, fashion, and cuisine**, Korea has become a powerful cultural force shaping contemporary life far beyond Asia.

Beyond its global cultural influence, Korea is also known for being safe, reliable, and welcoming, offering a comfortable and secure environment.

This balance between cultural vibrancy and a convenient, visitor-friendly environment creates a unique experience — **where centuries-old traditions and modern lifestyles naturally coexist**.

With straightforward entry procedures and a strong sense of hospitality, Korea provides a setting in which international participants can focus on connection, collaboration, and meaningful scientific exchange across the ISPRS community.



**K-CULTURE &
CREATIVE ENERGY**



**SAFE &
WELCOMING**



**VISA-FREE
ACCESS**



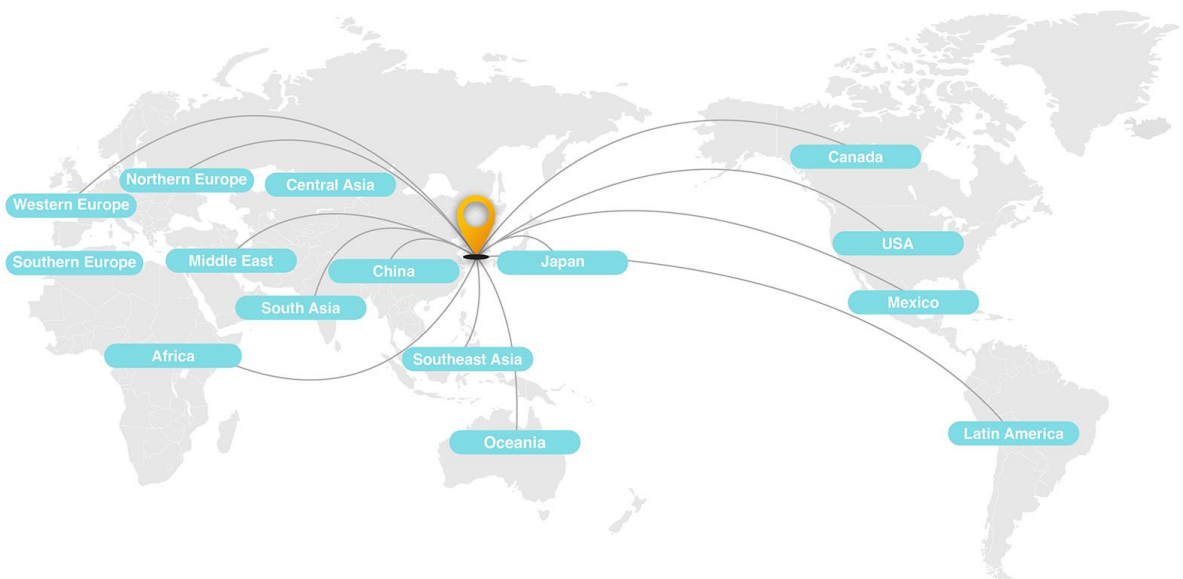
Traveling to Korea

Easier than Ever



World's Best Airport Incheon International Airport

Incheon is home to Incheon International Airport, the main gateway to Korea. It offers exceptional accessibility, allowing visitors to travel from anywhere in the world. Incheon International Airport is widely recognized as one of the world's best airports.



With K-ETA (Korea Electronic Travel Authorization), many international participants can enter Korea **without a visa** through a simple online authorization process. This streamlined system makes traveling to Korea effortless.

Visa-free Entry Available

110

Countries

Direct Flights to Incheon

54

Countries

100

Airlines

178

Cities

[Check](#) whether your country is eligible for K-ETA application.

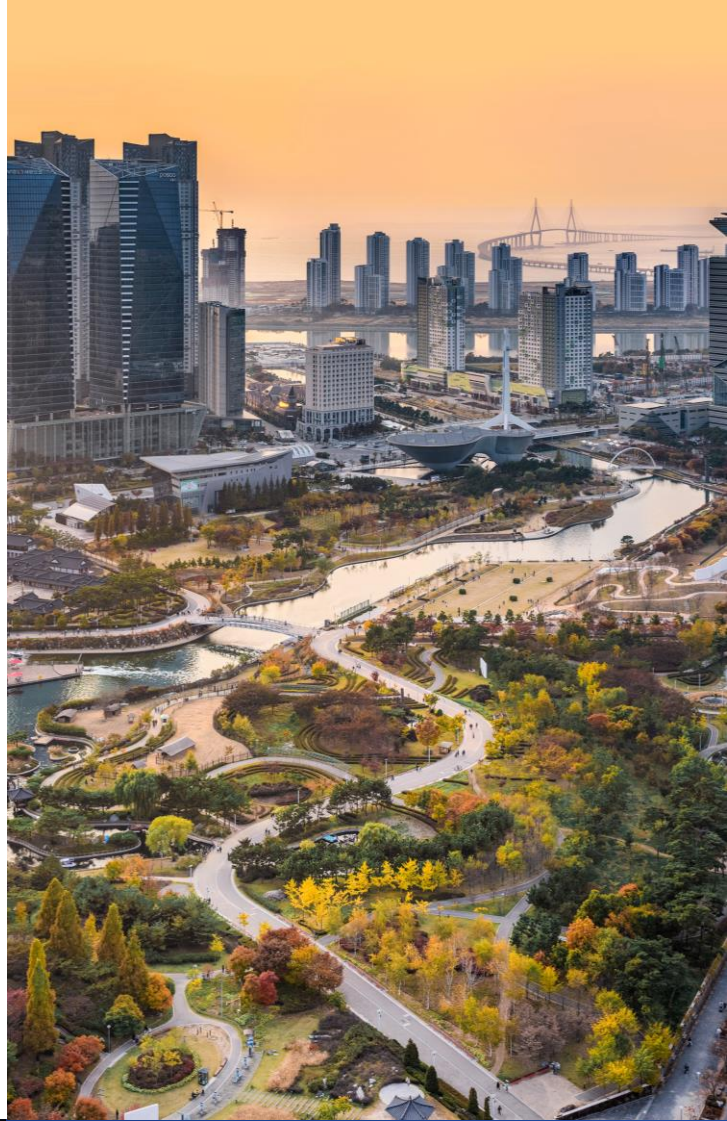
The Host City:

Incheon, Korea

A Dynamic City, a Global Gateway

Incheon stands at the crossroads of global connectivity and spatial innovation. As Korea's main international gateway, the city offers an environment where advanced research, smart-city development, and international exchange naturally converge – an ideal setting for the ISPRS Congress.

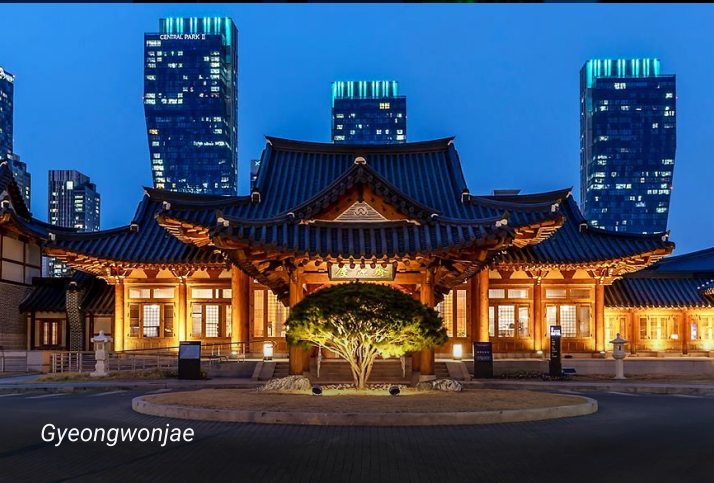
Situated on the western coast of South Korea and seamlessly connected to Seoul, Incheon combines metropolitan scale with outstanding accessibility, enabling researchers, practitioners, and industry leaders from around the world to gather with ease.



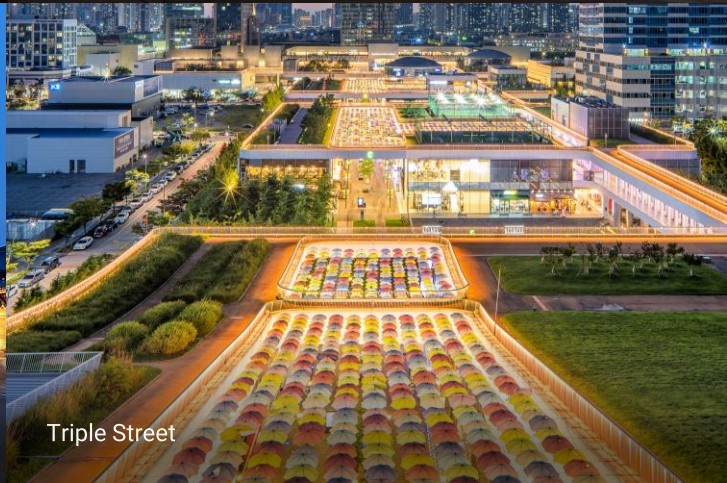
Tribowl



G-Tower



Gyeongwonjae



Triple Street

Congress Venue

Songdo ConvensiA

Songdo ConvensiA is a leading international convention and exhibition center located in the heart of Songdo with excellent accessibility — just **20 minutes** from Incheon International Airport and **60 minutes** from Seoul.

Featuring a **3,000-seat ballroom**, **35 meeting rooms**, and an exhibition hall accommodating up to **900 booths**, Songdo ConvensiA provides the scale and versatility required for a successful ISPRS Congress.



Everything within

15-Minute Walking Distance

- ✔ 7 Hotels (2,000+ rooms)
- ✔ 3 Major Shopping Centers
- ✔ Cultural & Performance Venues



Introducing KSGPC

ISPRS Ordinary Member of Korea



THE KOREAN SOCIETY OF SURVEYING, GEODESY, PHOTOGRAMMETRY AND CARTOGRAPHY (KSGPC)

As the premier professional authority for geospatial engineering in Korea, the Korea Society of Surveying, Geodesy, Photogrammetry and Cartography (KSGPC) is proud to lead the bid for the XXVI ISPRS Congress. Established in 1981, KSGPC has long served as a prestigious national organization, advancing excellence across surveying, geodesy, photogrammetry, remote sensing, cartography, and spatial information sciences.

Today, as the ISPRS Ordinary Member representing the Republic of Korea, KSGPC plays a pivotal role in connecting Korea's expertise with the global geospatial community. Built upon strong and enduring partnerships across academia, government, and industry, we foster a collaborative ecosystem that drives innovation beyond borders.

More than an organizing body, KSGPC is a committed partner dedicated to delivering a scientifically rigorous and seamlessly executed Congress—one that will contribute meaningfully to the future of geospatial science and technology.

This bid is supported by a strong and expanding network across Korea's geospatial community, bringing together academic societies, government institutions, research organizations, industry leaders, and emerging scholars. Together, they form the foundation of a collaborative ecosystem driving this bid forward. In the following pages, we introduce the organizations, institutions, and individuals shaping this journey.

In Partnership with Korea's Leading Geospatial Societies



More about Korea's ISPRS 2030 bid

Explore the full story and past newsletter editions [here](#).

From Korea to the people driving the bid (Newsletter Vol.0 ~ 2) —discover it all on our website.



Go to the
ISPRS 2030 Korea Website

COMING SOON

Vol 4. Beyond the Congress: Discover Incheon to Seoul